

# AL FAHAD 1

Tecom - Plot No. C008 - 026



**AL FAHAD**  
HOLDING



[www.alfahadholdingco.com](http://www.alfahadholdingco.com)



KEY PLAN

**TYPE: 2,3,6 & 7 TYPICAL**

FLOOR AREA: 104.60 SQ. MTS  
1,125.91 SQ. FT.

**TYPE: 4 TYPICAL**

FLOOR AREA: 126.90 SQ. MTS  
1,365.94 SQ. FT.

**TYPE: 5 TYPICAL**

FLOOR AREA: 110.20 SQ. MTS  
1,186.18 SQ. FT.


## Tecom - Plot No. C008 - 026

Imagine not having to drive for hours every day. Imagine a home that's a stone's throw away from the office! Ideally located between interchanges 4 and 5 on Sheikh Zayed Road, near Dubai Internet City and Media City. Set right in the heart of Dubai's growth corridor, one that includes luxury hotels, golf clubs, international schools and universities and world class shopping malls. All this within a short distance of your home. Take in a rock concert, catch the buzz of the Dubai International Film Festival, enjoy a round of Golf, or widen your horizons at the Knowledge Village. Indulge in everything from fine cuisine. Shopping and trendy clubs, exciting nightlife, upscale shopping malls, designer boutiques and ethnic gourmet restaurants. Enjoy the sun and sand, laze away your weekends by the beach, surf, ski or simply sun bathe. AL FAHAD 1 located next to Grand Millennium Hotel and comes with ultra-modern amenities that ensure you truly live life, swimming pools for adults as well as children, Fully equipped gymnasium, 24 hour security, Ample underground and surface parking, Separate sauna and steam rooms for men and women, Children's play room, High speed internet connectivity, Access control system, Central air-conditioning, Fire alarm system.

## Facilities

- 1 Modern Gym (female / male)
- 1 Swimming pool
- 1 Barbeque area
- 1 Children's play area
- 1 Sauna and steam room
- 1 Squash room

# Project Layout Gallery



NO. OF BED TYPE		AREA	
3-BEDROOM	1	195.70 SQ. MTS/	2,106.50 SQ. FT.
3-BEDROOM	8	199.70 SQ. MTS/	2,149.55 SQ. FT.
2-BEDROOM	2,3,6&7	104.60 SQ. MTS/	1,125.91 SQ. FT.
2-BEDROOM	4	126.90 SQ. MTS/	1,365.94 SQ. FT.
2-BEDROOM	5	110.20 SQ. MTS/	1,186.18 SQ. FT.



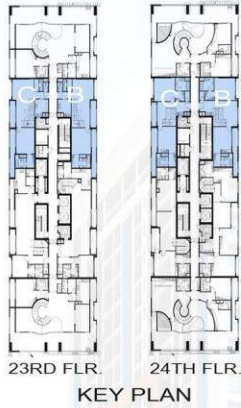
KEY PLAN



**TYPE: 1 & 8 TYPICAL**

FLOOR AREA: 195.70 / 199.70 SQ. MTS  
2,106.50 / 2,149.55 SQ. FT.

# Project Layout Gallery



**TYPE: B & C DUPLEX**

FLOOR AREA: 233.55 / 234.45 SQ. MTS  
2,513.91 / 2,523.60 SQ. FT.



**TYPE: D DUPLEX**

FLOOR AREA: 310.10 SQ. MTS  
3,337.89 SQ. FT.

# Project Layout Gallery

23RD FLR. 24TH FLR.  
KEY PLAN

**23RD FLOOR** **TYPE: E DUPLEX** **24TH FLOOR**

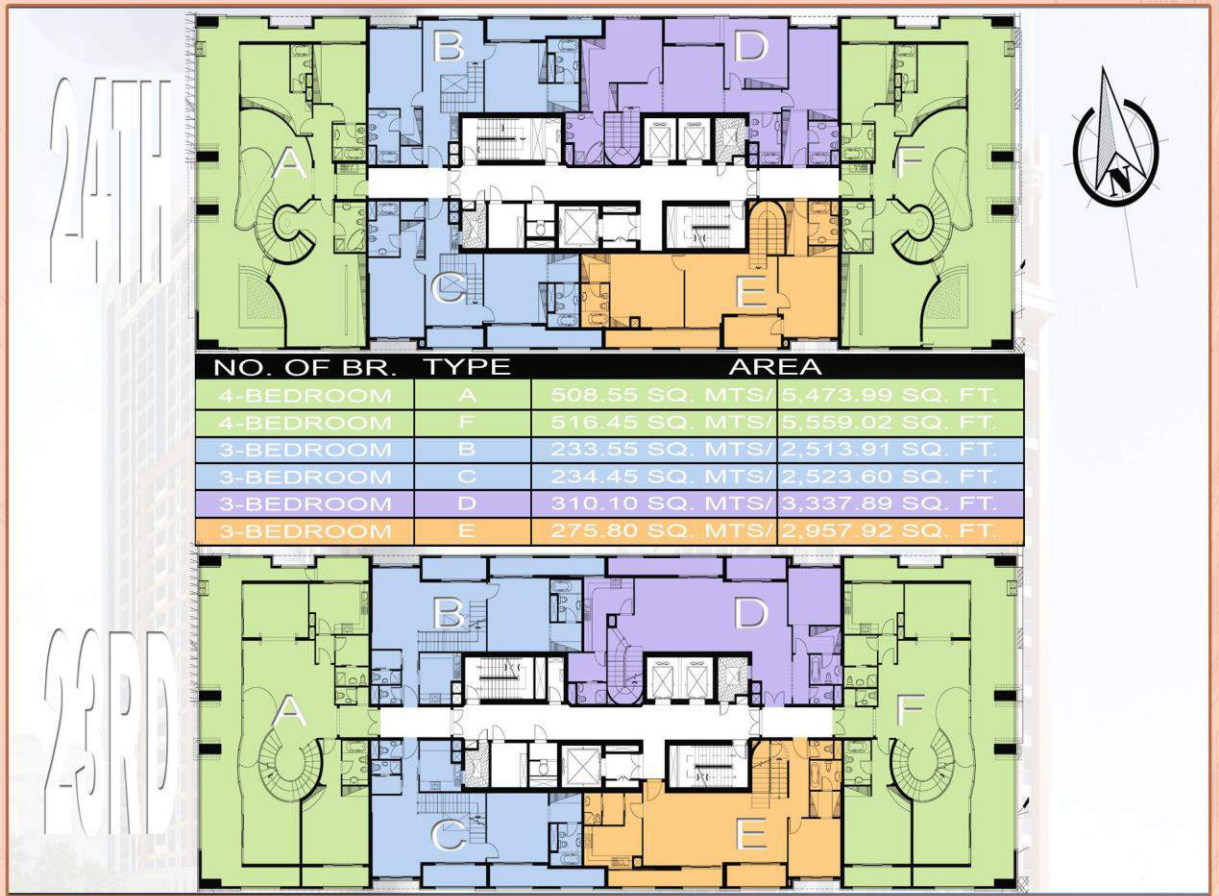
FLOOR AREA: 274.80 SQ. MTS  
2,957.92 SQ. FT.

23RD FLR. 24TH FLR.  
KEY PLAN

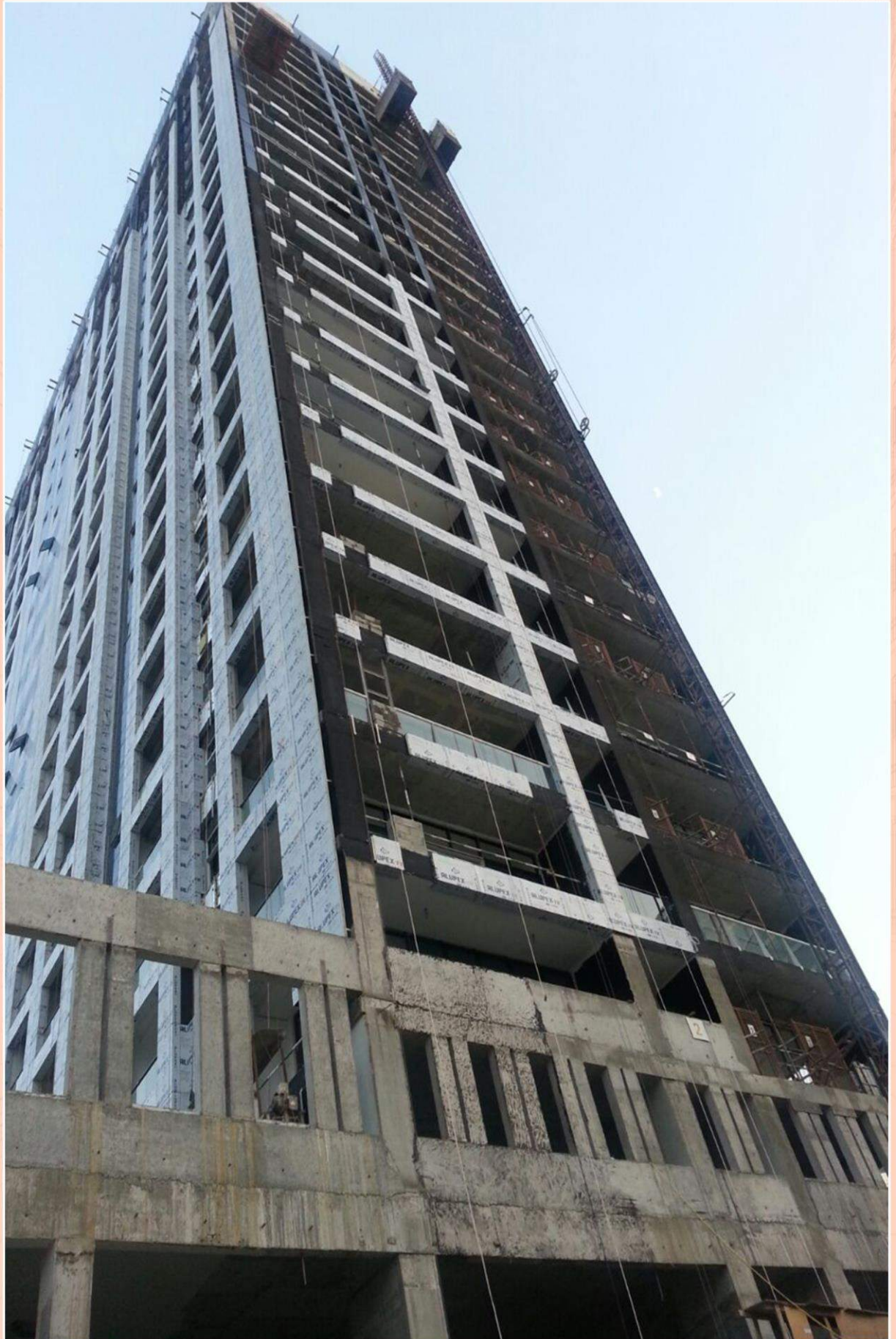
**23RD FLOOR** **TYPE: A & F DUPLEX** **24TH FLOOR**

FLOOR AREA: 508.55 / 516.45 SQ. MTS  
5,473.99 / 5,559.02 SQ. FT.

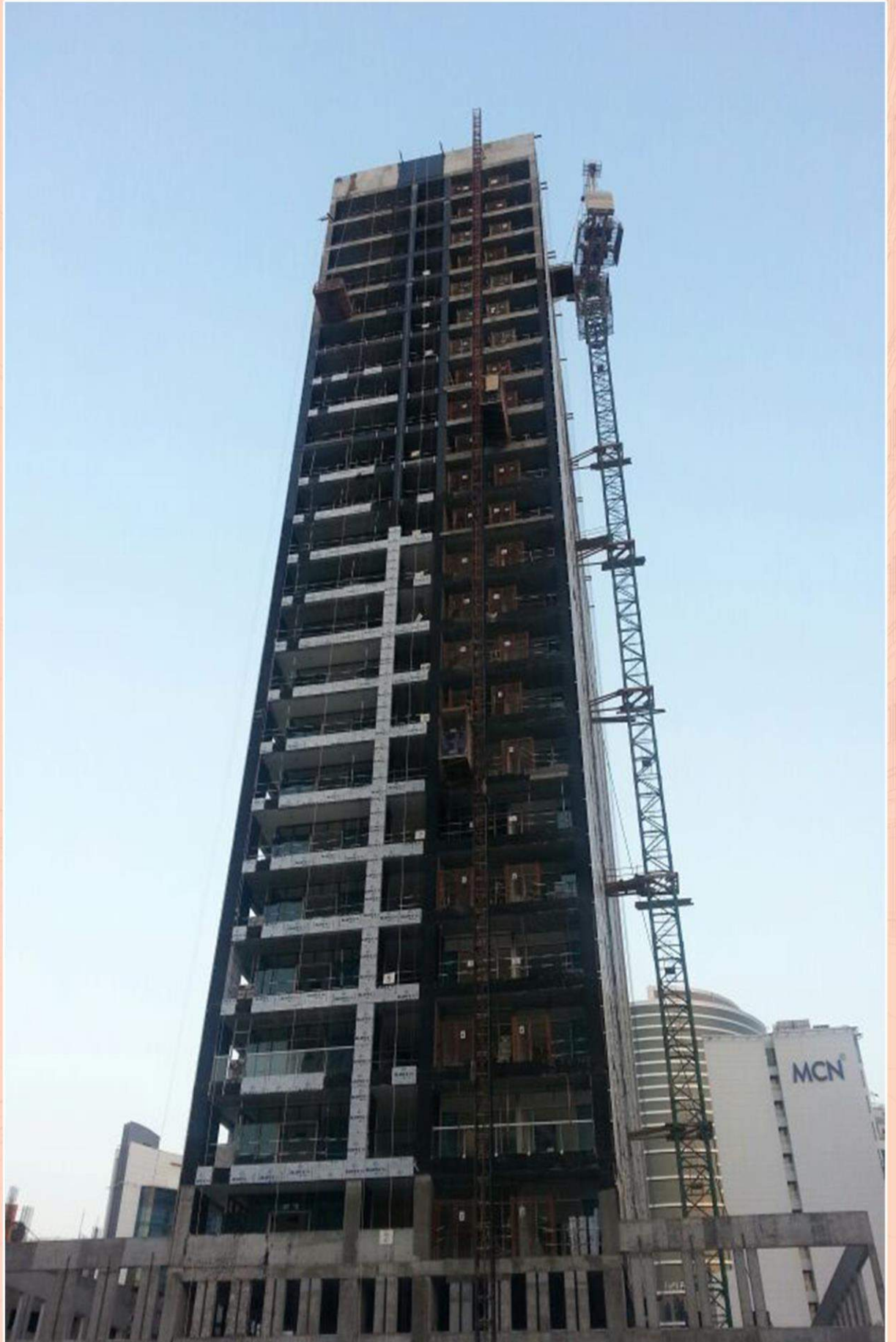
# Project Layout Gallery



# Project Updates Gallery

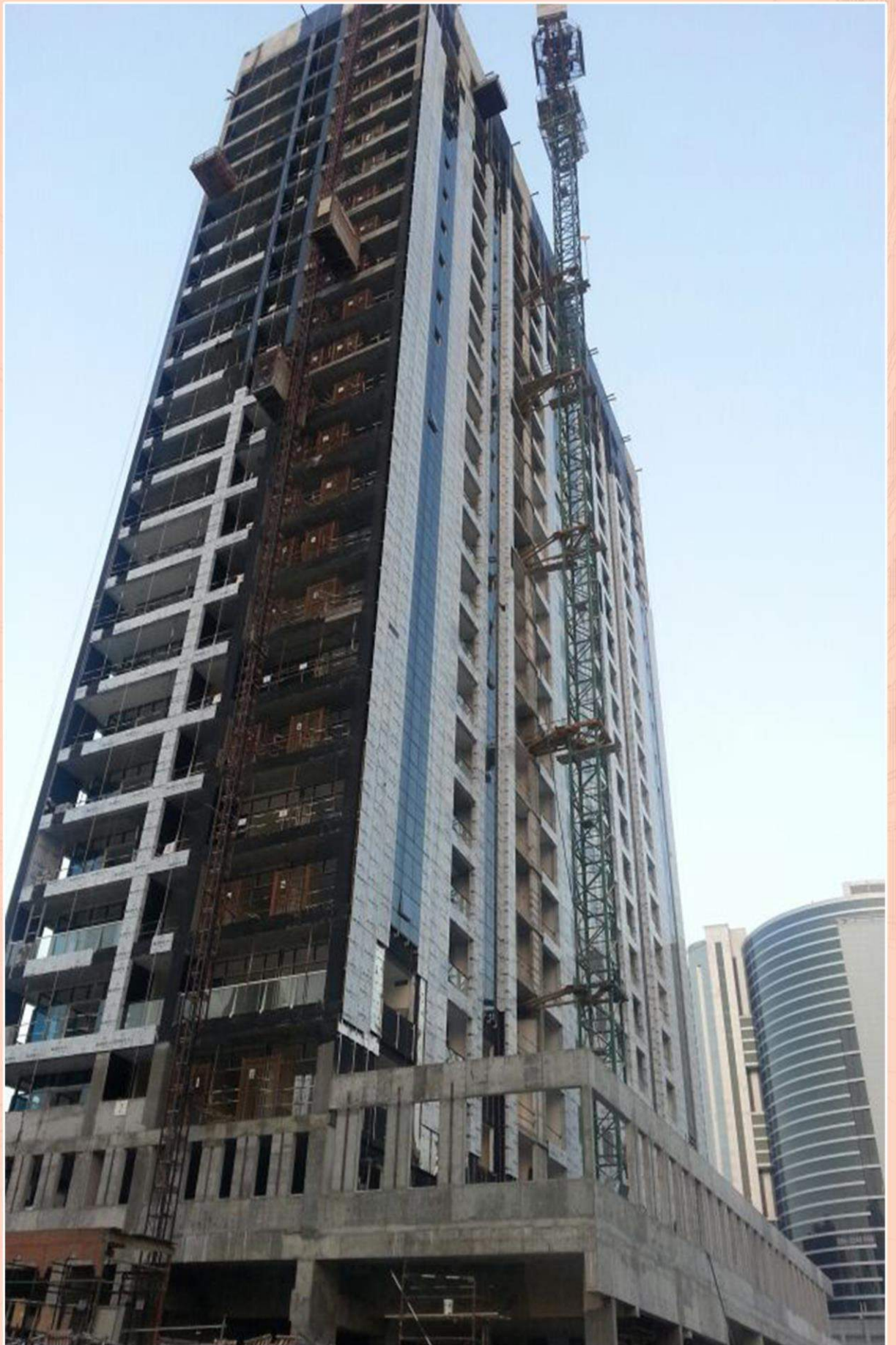


# Project Updates Gallery





# Project Updates Gallery



# Project Updates Gallery



# Project Updates Gallery



# Project Updates Gallery



# Project Updates Gallery



# Project Updates Gallery



# Project Updates Gallery



# Project Updates Gallery





# Project Updates Gallery



# Project Updates Gallery

